

VIOLENCE ACROSS GENERATIONS: what we know and where do we go?

Dr Franziska Meinck
Prof Nicola Christofides
Dr Nataly Woollett



BANAKEKELI
YOUNG CARERS



THE UNIVERSITY
of EDINBURGH

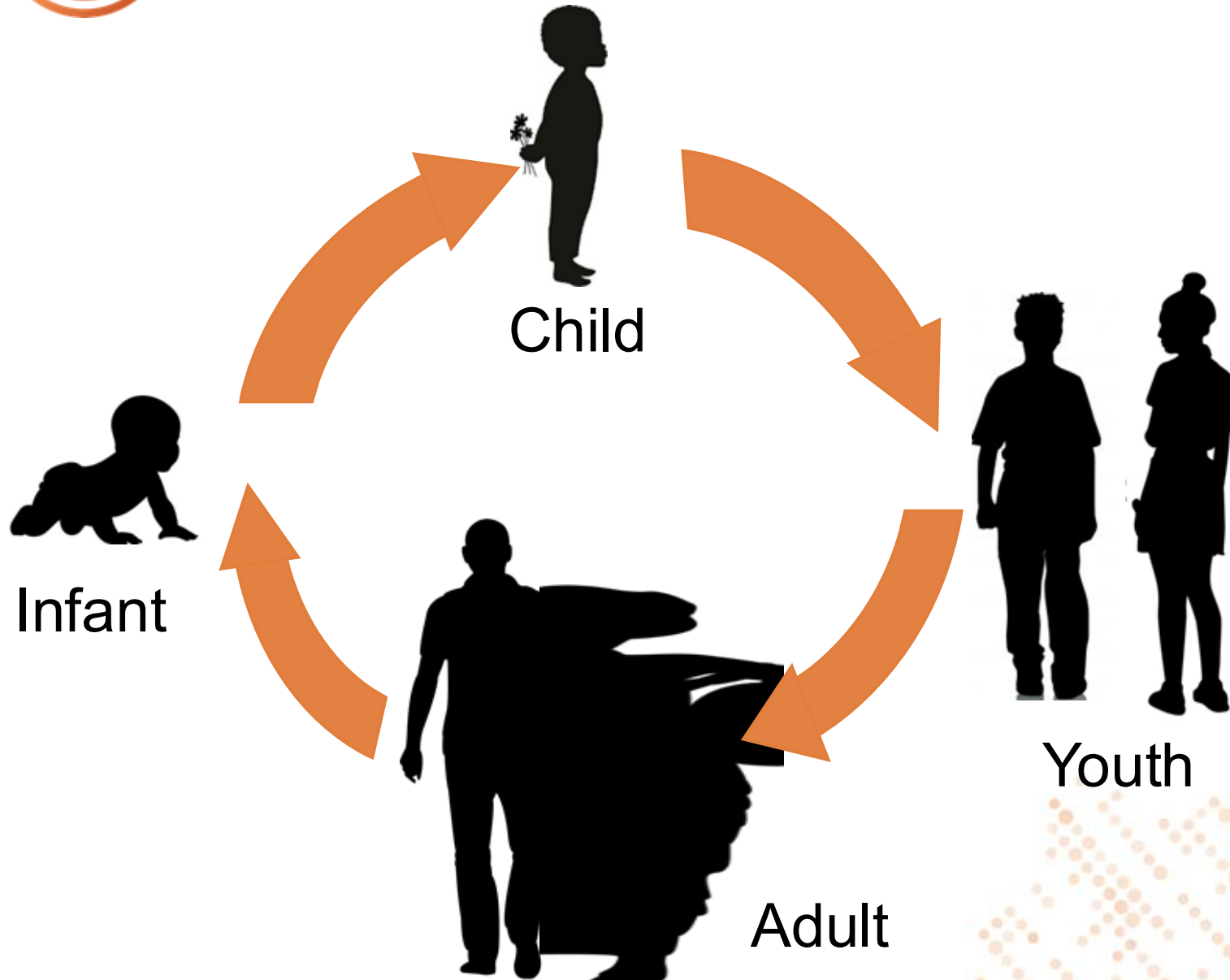


UNIVERSITY OF THE
WITWATERSRAND
JOHANNESBURG





Intergenerational violence cycling



re-victimisation
triples

and

1 in 5



perpetrate

INTERRUPT_VIOLENCE

Young Carers 1

Young Carers 2

2022/2024

2010

2011



N=1664

Age 10-17



N=1648

Age 11-18



N=1304

Age 22-30



+

N=602

+



N=280

Age 6+

Qualitative:
30 young adults
20 caregivers
23 children

Round 2
7 complete families

LONGITUDINAL

Pilot study

2021

N=200



Prevalence of VAC experienced

Physical abuse: 55%

Hit with object: 83%

Severe—Left with injury or mark: 19%

Emotional abuse: 56%

Deprivational abuse: 8%

Any caregiver violence: 75%



Repeated sibling violence: 21%

Violence between household adults: 39%

Any household violence: 84%



Repeated peer violence: 53%

Sexual abuse: 6%



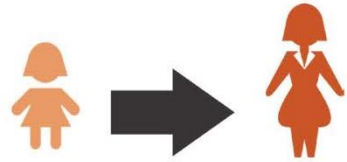
Community violence: 27%

Attacked: 17%

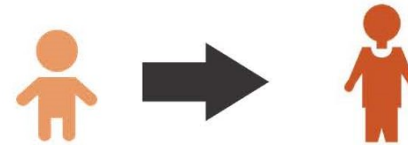
Witnessed: 15%

Any violence: 91%

Types of intergenerational violence continuity



25% (178/720)
child abuse – intimate
partner violence



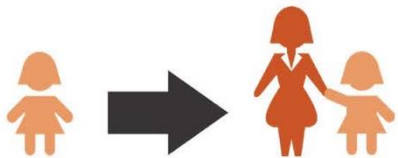
34% (186/551)
child abuse – IPV
perpetration



24% (129/547)
intimate partner violence –
child abuse



12% (27/228)
IPV perpetration –
child abuse



39% (213/547)
child abuse – child
abuse



13% (30/232)
child abuse – child
abuse

Pathways to intergenerational continuity of violence

- Hardships experienced in childhood such as the death of an important caregiver as well as living in a home affected by HIV and food insecurity were noted for women but not for men
- Pregnancy before the age of 18 years had a direct effect on all types of intergenerational cycling of violence (could be through social exclusion and parenting rather than poorer mental health)
- Mental health challenges such as PTSD and suicidality were drivers of intergenerational violence continuity for both women and men
- Depression had no effect intergenerational violence cycling for women or men in our analysis
- Inequitable gender beliefs and the extension of these beliefs to parenting girls and boys differently contribute explained the continuity of violence for both women and men
- Parental stress related to financial burden of children and the challenges balancing responsibilities related to children contributed directly and also mediated the relationship between food insecurity and intergenerational trajectories



There are eight domains of parenting for young female adults in Mpumalanga

Consistent discipline: How consistently does parent reinforce consequences for misbehaviour

Laxness: How rigid (inflexible) is parent with child

Support: How often does parent show affection, responsiveness, and sensitivity to child's needs

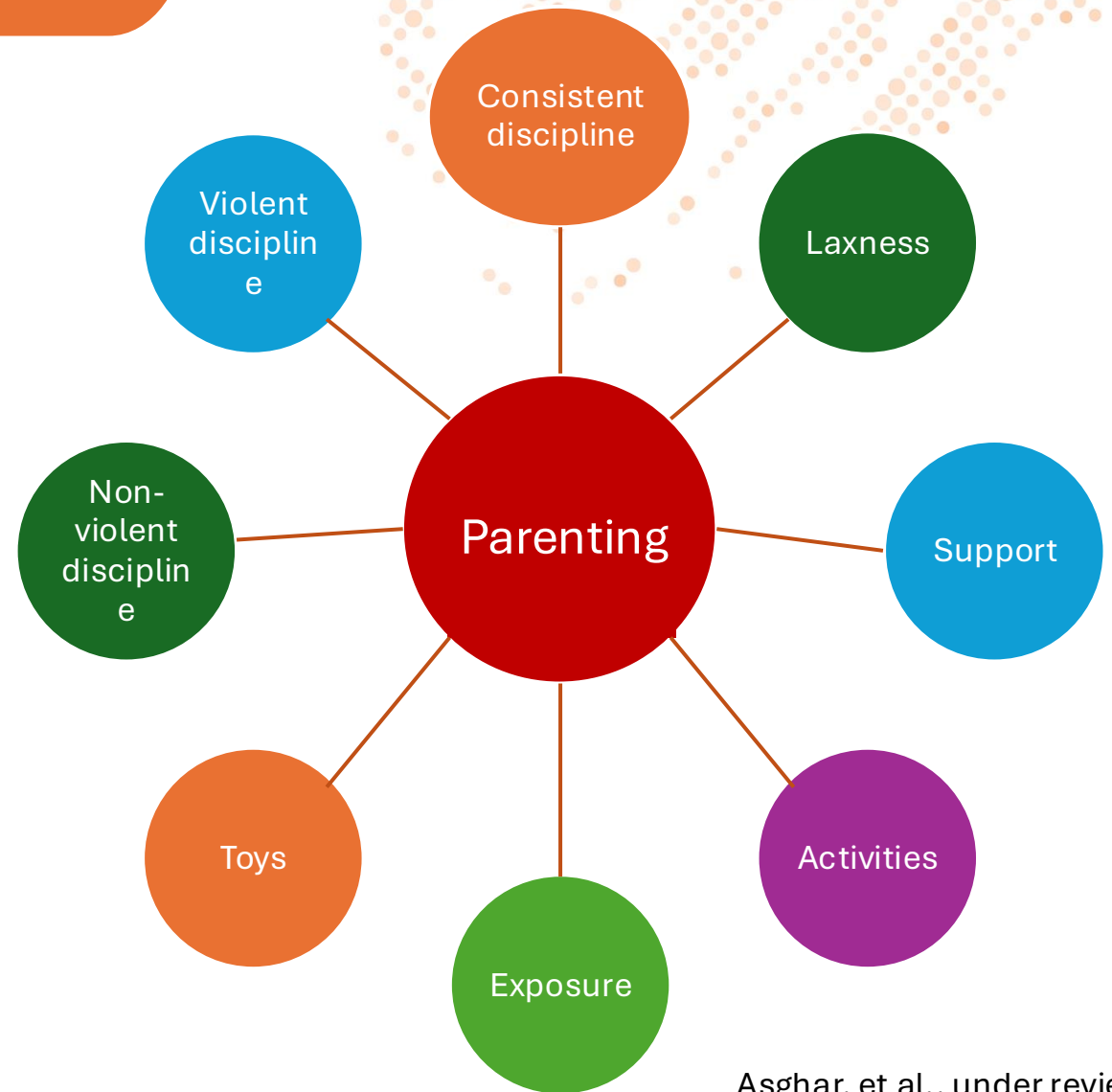
Activities: How often does parent engage in activities such as singing, dancing, and reading books with child

Exposure: How often does parent involve child in household chores or allow child to join activities outside the home

Toys: How often does parent play with toys with the child

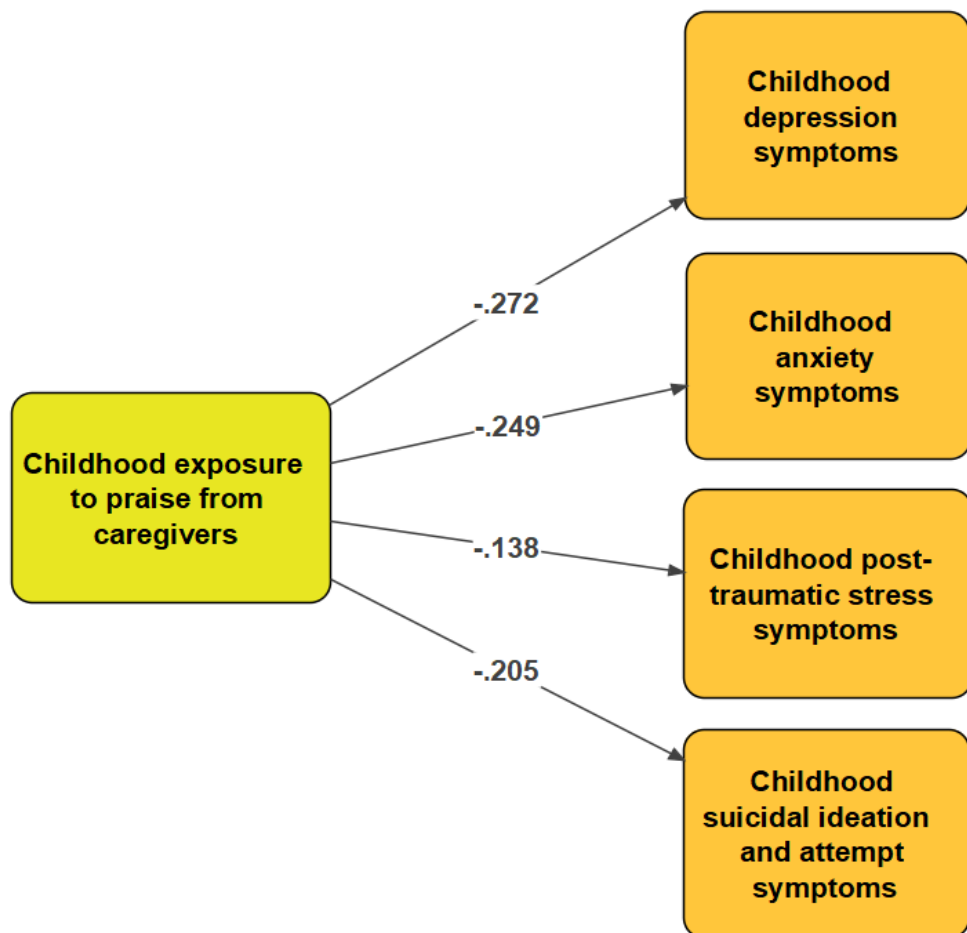
Non-violent discipline: How often does parent explain misbehaviour, remove privileges

Violent discipline: Does parent use physical or psychological abuse or neglect against child

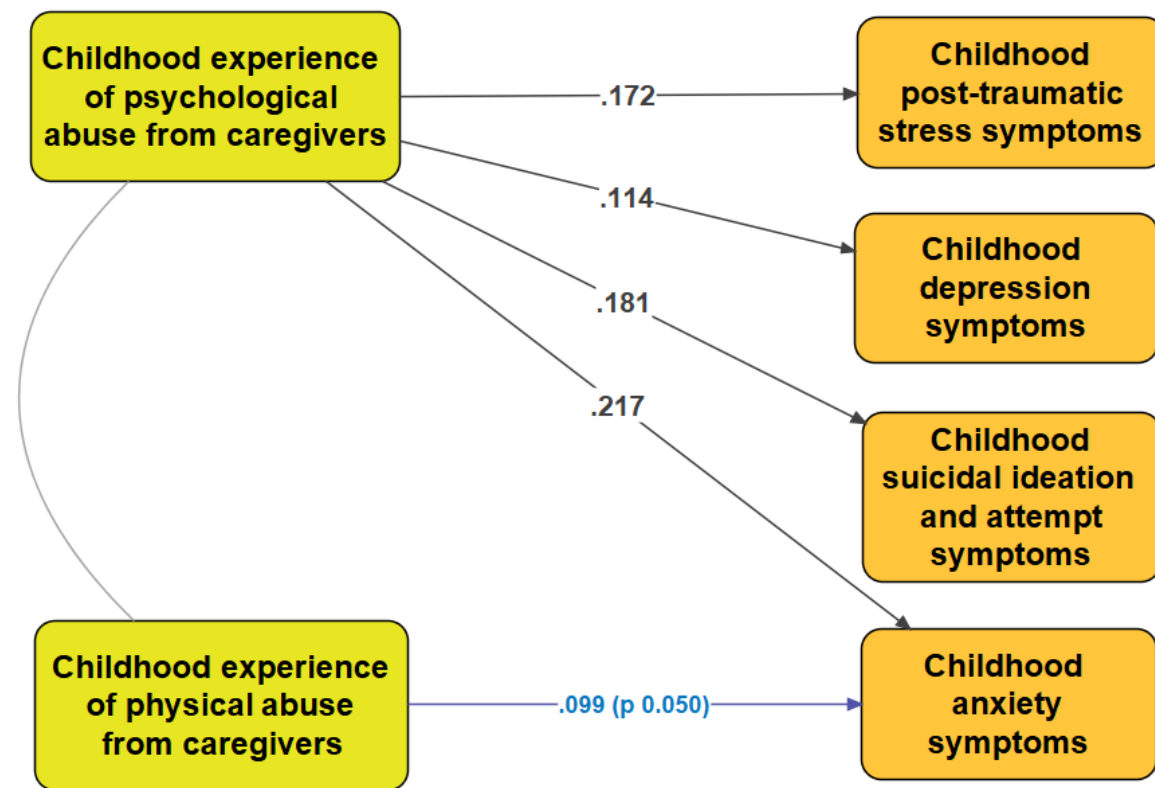




Receiving more praise from parents in childhood reduces symptoms of mental distress in adolescence



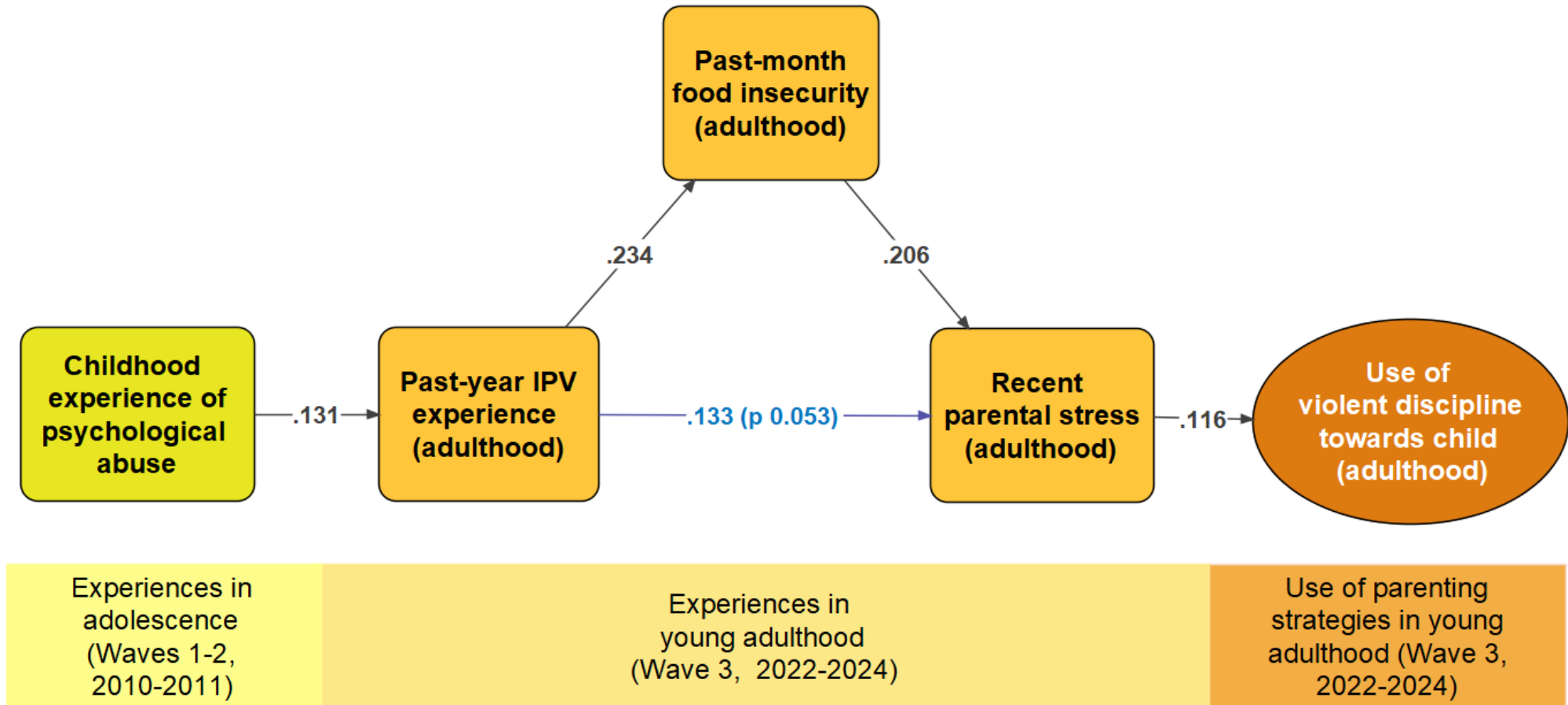
Experiencing psychological abuse from caregivers exacerbates childhood mental distress



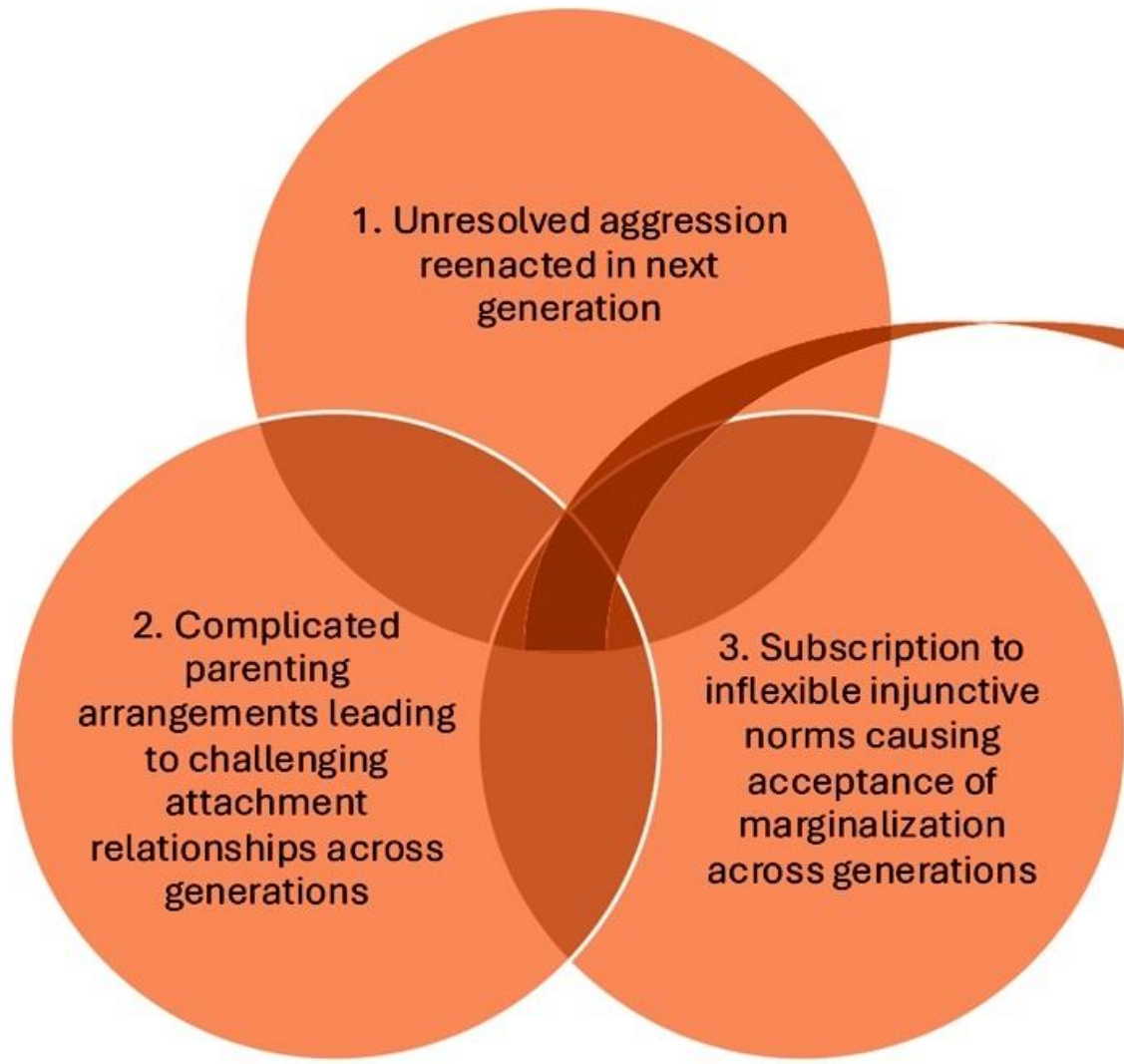
Experiences in adolescence (Waves 1-2, 2010-2011)



Experiencing psychological abuse leads to greater risk of other factors which lead to violent parenting



Poverty
Food insecurity
Unemployment
Poor mental health
Poor services (justice, health, education, child protection)
Poor understanding child & adolescent development



Reenactment of the past in the present
Vulnerability





Recommendations 1

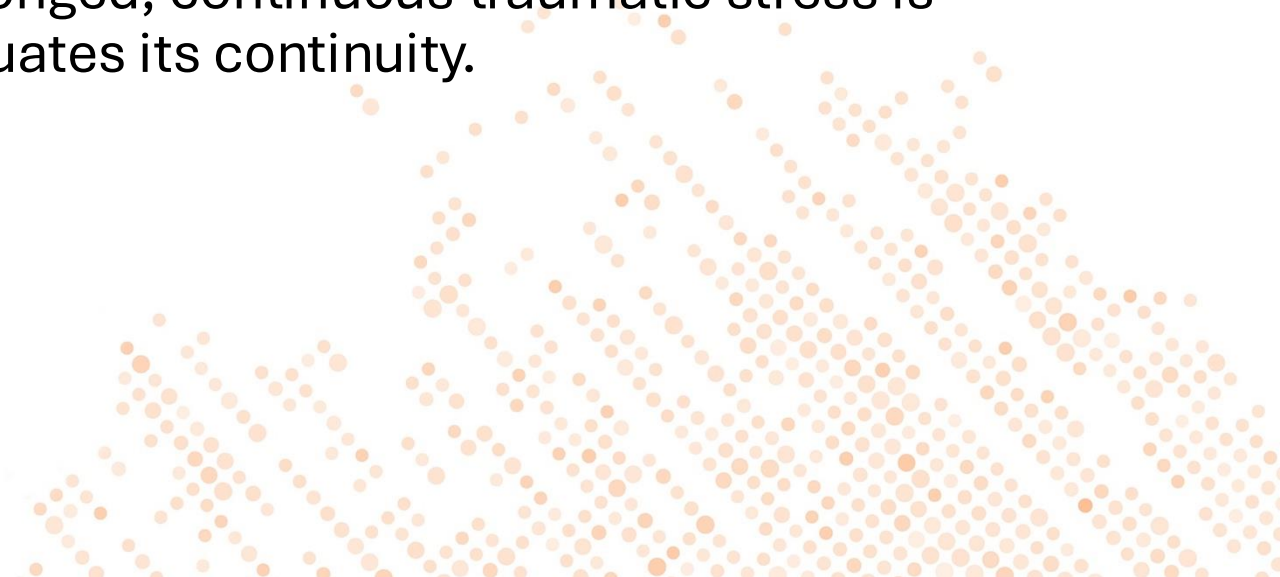
- These findings indicate that structural drivers that place families at risk need to be addressed.
- Harmful gender norms and attitudes towards violence need intentional engagement on multiple levels.
- Mental health needs adequate investment and awareness raising.
- Parenting support is indicated both through strengthening parent child/adolescent communication and relationships.





Recommendations 2

- The belief that corporal punishment is not harmful and is effective must be eliminated. The good policies and legislation that exist in many countries need to be enacted and upheld.
- Continuity of violence is common across the lifecourse and without deliberate and considered interventions to address it, it will lead to an obvious outcome.
- Interventions must be holistic and multipronged; continuous traumatic stress is not tenable over the lifecourse and perpetuates its continuity.



Thank you!

<https://interruptviolence.sps.ed.ac.uk/research>



BANAKEKELI
YOUNG CARERS



THE UNIVERSITY
of EDINBURGH



UNIVERSITY OF THE
WITWATERSRAND
JOHANNESBURG



UK Research
and Innovation

